

Escape Session Freeze

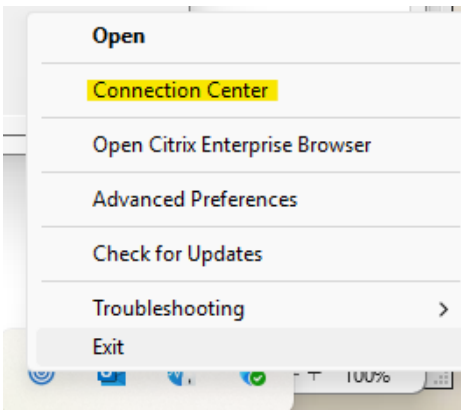
There is no need to reboot your computer. Your Escape session is running on a remote desktop via Citrix which is out of your control and not associated with your computer.

If your screen shows 'Not Responding' for over a minute, follow these steps:

1. Click on the up arrow in the lower right corner of the screen and then right click on the Citrix icon:



2. Then click on Connection Center:



3. Click on your active FMIS system name and then click Log Off:

